

JSC RustiClad

Horizontal Rusticated Weatherboard Cladding

Version 3.7 | February 2026



PREMIUM ARCHITECTURAL
& BUILDING SOLUTIONS

Contents

Introduction	3
Building Elements	4
Pre-Installation	7
Installation	8
Appendix	14

Cover image: Cox Street Home | Fabric Architecture
Photo: Stephen Goodenough

INTRODUCTION

GENERAL

This guide covers the scope of use, storage and handling, fixing, finishing and maintenance guidelines for JSC RustiClad Horizontal Rusticated Weatherboard Cladding system.

JSC RustiClad is a cavity-based external wall cladding system comprising of:

- timber weatherboards finished with suitable coating
- H3.2 treated timber castellated cavity battens
- fascia boards, moulding profiles, and associated components

JSC weatherboards are available in a range of timber species and profiled to JSC specifications, consistent with [NZS 3617:1979](#) and [BRANZ BU411](#).

This guide covers the installation of JSC RustiClad Horizontal Rusticated weatherboards when fixed horizontally over:

- **JSC-U 45×20 Non-Structural Cavity Battens** - 20mm thick castellated cavity battens; or
- **JSC-V 45×45 and JSC 70×45 Structural Cavity Battens** - 45mm thick castellated cavity battens.

For direct fix installation of JSC weatherboards, refer to Acceptable Solution E2/AS1.

For Building Code regulations, refer to [RustiClad Design Guide](#).

SCOPE AND LIMITATION OF USE

It is the specifier’s responsibility to ensure that:

- the details in this specification are appropriate for the intended application, and
- additional detailing is obtained for a specific design or any areas that fall outside the scope of our RustiClad CodeMark certificate [CMNZ 30081](#).

JSC RustiClad System must be installed by a suitably qualified and experienced trade person. Where Restricted Building Work (RBW) applies, the installer shall be a Licensed Building Practitioner (LBP) or supervised by an LBP.

BUILDING ELEMENTS

STRUCTURE AND FRAMING

The performance and appearance of the cladding system rely on the substrate. JSC cladding systems are designed for timber wall framing. However, JSC 45mm Cavity Battens can also be fixed to structures outside of [NZS 3604:2011](#). 45mm Cavity Batten fixings should be determined by an engineer based on fixing tensions required on [JSC Structural Cavity Batten Fixing Guide](#).

Before installation, ensure the substrate is straight and true. Timber framing must be within the framing tolerances of [NZS 3604:2011](#) Section 2.2 and Table 2.1. For specific requirements relating to support for timber weatherboard cladding, refer to Sections 8 and 11 of [NZS 3604:2011](#).

In all cases, studs must be spaced at a maximum of 600mm centres.

If it is an existing building, the primary structure must be suitable for the intended building work.

WALL UNDERLAY

Wall underlay must comply with [E2/AS1 Table C.2.1.1](#) and [E2/AS1 9.1.6](#). Alternatively, a wall underlay with a Product Certificate (CodeMark) or a BRANZ Appraisal is acceptable, provided the conditions of use and scope comply.

Wall underlays (flexible or rigid) shall have a compliant

and compatible flexible flashing tape applied to head and sill framing in accordance with [E2/AS1 4.2.12](#) and opening reveals as per [E2/AS1 9.1.4](#).

CAVITY BATTENS

Under E2/AS1, the use of solid cavity battens is permitted for the installation of horizontal weatherboards as part of a cavity system. However, JSC's installation requirements for horizontal cladding products, such as RustiClad, specifically require castellated cavity battens installed vertically. Castellated cavity battens provide ventilation and capillary break behind the cladding. They also allow ventilation around flashings and junctions, which is critical for managing moisture.

JSC-U 45×20 Non-Structural Cavity Battens are universal cavity battens that can be used either vertically or horizontally. However, when used as part of the JSC RustiClad installation system, these battens must only be installed vertically over the studs at a maximum of 600mm centres.

JSC-V 45×45 and JSC 70×45 Structural Cavity Battens are structural cavity battens that allow additional options to create deeper window reveals and other design elements. Refer to [JSC Structural Cavity Batten Fixing Guide](#) for more information on spacings and fixings.

JSC castellated cavity battens are made of H3.2 CCA or MCA treated Radiata Pine which aligns with the principle that the minimum durability for enclosed building elements is greater than that for accessible elements.

The front and back faces of the battens have castellations at regular intervals to allow pressures to equalise, moisture to drain, and improve air circulation which aids evaporation.

Proper ventilation is crucial to ensure airflow through the cavity, preventing moisture buildup that could cause damage to the structure like rot, mould, or decay.

INTER-STOREY JUNCTIONS

Inter-storey junctions in cladding are required for walls with a maximum of 7 metres in height or over two storeys as per [E2/AS1 Paragraph 9.1.8.4](#).

VERTICAL CONTROL JOINT

For long, uninterrupted walls in high wind zones or buildings that are two storeys or taller, control joints should be placed every 6 metres to accommodate building movement across the wall.

GROUND CLEARANCE

As per [E2/AS1 Paragraph 9.1.2](#) and [Table 9.1.2.1](#), the cladding should, at the ground level:

- Extend past the bottom plate on a concrete slab or bottom of bearer or lowest part of timber floor framing by 50mm
- Finish a minimum of 100mm above paved surface or 175mm above unpaved surface, and
- Have a minimum 35mm clearance to roof claddings and decks.

DECKS AND DECORATIVE ELEMENTS

Ensure a gap for drainage and cleaning when attaching elements like letterboxes, pergolas, or decorative features to the cladding or close to it.

E2/AS1 requires a 12mm minimum gap between slatted timber decks, stringers and external wall cladding.

For raised surfaces like tiles, pavers, or timber on weathertight decks, a 12mm minimum gap against walls or balustrades is required.

CAVITY CLOSER/VERMIN PROOFING

Cavity closer/vermin proofing should be specified in compliance with [E2/AS1 9.1.7.5](#), [9.1.7.6](#), [9.1.7.7](#) and [Figure 9.1.7.4A](#) to close off the bottom of the cavity. Ensure it is placed at the base of all walls, open horizontal or raking junctions, and over openings (windows, penetrations, etc.) Size the cavity closer/vermin-proofing to fit the cavity dimensions.

FLASHINGS

As per [E2/AS1 9.2.4](#):

- Flashing materials should comply with [E2/AS1 Table C.1.1.1A](#) and meet the compatibility of [E2/AS1 Table C.1.1.1B](#) and [Table C.1.1.1C](#).
- Ensure that flashing materials are compatible with both the window frame and cladding, including their fixings. Windows to comply with [NZS 4211:2022](#).

NAIL FIXINGS

Annular grooved nails must be used to fix JSC RustiClad weatherboards. The nail length must allow a minimum of 30mm embedment into the framing for non-structural cavity batten and a minimum of 35mm embedment into structural cavity batten. JSC weatherboards must be pre-drilled with a slight upward slope (0-2°). The hole should be approximately 1mm smaller than the nail shank to reduce the risk of moisture entry.

Note: For example, for a 75 × 3.25mm nail, use a 2.5mm drill bit.

Oil/Stain Finish – Use annular grooved Rose Head, Pentagon Head or Flat Head.

Paint Finish – Use annular grooved Jolt Head, Flat Head, Pentagon Head or Rose Head.

In certain circumstances, screw fixing of weatherboards is acceptable. Please refer to the [JSC Screw Fixing Cladding Guide](#) for further information.

TABLE 1 - CAVITY BATTENS	
Profile	Description
Non-Structural Cavity Batten	
JSC-U 45mm x 20mm	18° bevelled edges and castellation on both faces
Structural Cavity Batten	
JSC-V 45mm x 45mm	Square edges and castellation on both faces
JSC 70mm x 45mm	18° bevelled edges and castellation on both faces

TABLE 2 - FIXINGS INTO FRAMING		
Framing	Cavity Batten	Weatherboard Fixing
Timber Framing	45mm x 20mm (Non-Structural)	Annular grooved nail with 30mm minimum embedment into timber frame
	45mm x 45mm or 70mm x 45mm (Structural)	Annular grooved nail with 35mm minimum embedment into cavity batten

TABLE 3 - NAIL FIXINGS		
Species	Nail Material	
Western Red Cedar (<i>Thuja plicata</i>)	316 Stainless Steel or Silicon Bronze	
Alaskan Yellow Cedar (<i>Callitropsis nootkatensis</i>)		
Radiata Pine (<i>Pinus radiata</i>)		
Nordic Pine (<i>Pinus sylvestris</i>)		
JSC TMT Thermally Modified Species	Nail Material	
TMT Taiga	316 Stainless Steel or Silicon Bronze	Flat Head, Rose Head or Pentagon Head only
TMT Taxon		
TMT Amba		
TMT ThermoPine		
TMT ThermoPine - H3.2 (MicroPro® treated)		

- Notes:**
- Silicon bronze fixings may cause copper leaching. This effect is more noticeable with lighter finishes. It is aesthetic and does not compromise the durability of the fixing.
 - For the use of any alternative fixing of equivalent properties refer to [E2/AS1 Table C.3.1.1](#) and to [E2/AS1 Table C.1.1.1A](#) for alternative material selection.
 - JSC recommends fixing materials as per **Table 3 - Nail Fixings**, as they will at least match the life of the cladding. (E2/AS1 allows the use of galvanised fixings, although JSC does not endorse their use.)
 - Jolt head nails are only suitable for paint-finished weatherboards.
 - For buildings located in exposure 'Zone D', 316 stainless steel fixings must be used as per [NZS 3604:2011](#).

PRE-INSTALLATION

BUILDING CONSENT DOCUMENTS

Ensure that the Approved Building Consent plans are on-site. Follow the approved plans and communicate any deviations to the plans with the designer first before making any changes.

MOISTURE MANAGEMENT

As per [NZS 3602:2003 Table 4](#) the moisture content must be below 20% for framing and between 14-18% for timber cladding at the time of weatherboard installation. Before installation, use a moisture meter to check the moisture content of 5% of the boards (but not less than 10 boards) at the centre of the length and in the middle of the board. Do not start fixing JSC weatherboards until 90% of the readings meet the required range.

HEALTH AND SAFETY

When handling JSC products or using tools, use appropriate PPE; including but not limited to eye, ear and respiratory protection for you and others who could be affected. Cut weatherboards in well-ventilated areas. Dispose of offcuts and sawdust of treated and coated timber, and chemical products such as coatings and adhesives in accordance with the manufacturer's instructions and local council requirements. For more information refer to [JSC Products - Site Health & Safety Information](#).

DELIVERY, STORAGE, AND HANDLING

Correct handling and storage of JSC weatherboards are critical for best performance, ease of installation and warranty compliance.

JSC products should be delivered dry, unmarked, and undamaged from freight and handling. All deliveries should be inspected upon arrival. Delivery should be scheduled to minimise onsite storage time. All JSC products should be lifted off the truck by hoist or hand.

If unloading by crane or hiab, ensure there is a minimum of two well spaced load points to avoid excessive flexing.

Note: When using slings or chains, packers should be used to spread the load and protect the boards.

Stack weatherboards horizontally in a dry area, clear of the ground by 100mm and supported on dry and clean timber bearers at a maximum of 900mm centres.

Keep weatherboards dry; either by storing within an enclosed building or use an additional weatherproof cover as a secondary protection to JSC packaging wrap if stored outside. Ensure that there is sufficient airflow to avoid condensation. Do not store weatherboards over standing water or vegetation. Storing weatherboards in damp or uncovered areas increases the risk of moisture absorption. If weatherboards become wet, allow them to fully dry to the recommended consistent moisture content before installation.

Take extra care to protect weatherboard edges and surfaces, particularly during installation.

PRIMARY STRUCTURE AND WALL UNDERLAY

Ensure that the substrate is straight and true. Confirm the timber framing has been constructed in accordance with the building consent and construction details, or in the case of an existing building, it is suitable for the intended building work.

The selected wall underlay and flexible tape system must be installed in accordance with the underlay and tape manufacturer's instructions prior to the installation of the cavity battens.

The flexible underlay can be restrained from bulging into the drained cavity by applying polypropylene tape at 300mm centres.

Rigid air barriers must be installed in accordance with Acceptable Solution E2/AS1 and be overlaid with flexible tape over trimmed openings.

Trimmed openings are to be prepared as per [E2/AS1 Paragraph 9.1.4](#).

Stud centres must be spaced at a maximum of 600mm apart.

If installing **JSC-U 45×20 Non-Structural Cavity Battens**, the battens must be installed vertically, over the studs, at maximum 600mm centres.

If installing **JSC-V 45×45** or **JSC 70×45 Structural Cavity Battens**, refer to [JSC Structural Cavity Batten Fixing Guide](#) for spacings and fixing requirements.

COATING

JSC weatherboards must be coated using a suitable exterior grade timber cladding coating and applied according to the manufacturer’s specification. Refer to the manufacturer’s guidance for use and suitability.

Weatherboard coating is done in two phases:

- Base coat(s) applied to all four sides before installation; and
- Top coat(s) applied after installation.

Weatherboards can be supplied either pre-finished with a factory-applied base coat or raw. If supplied raw, base coat(s) must be applied on-site to all sides and cut ends before installation.

Note: Only weatherboards coated on all sides in suitable coating comply with JSC CodeMark certification.

Pre-Coated Weatherboards

JSC highly recommends a factory-applied base coat for a premium finish on all sides. This controlled process reduces weather delays, human error, and contamination from dust and debris.

No claims will be accepted for contamination on weatherboards delivered uncoated.

On-Site Coating

When weatherboards are ordered raw, apply the base coat(s) and allow it to dry before installation.

Paint or Stain applications:

- Before installation, prime all four sides of the weatherboards with a suitable coating according to the coating manufacturer’s specification.
- During installation, all the cut ends must be coated twice.

Paint applications:

- Before installation and after applying the base coats, apply the first top coat to face and shown edges to minimise any colour difference due to lateral shrinkage.
- After installation, apply 2-3 top coats on all visible areas of cladding. Refer to the [Finishing](#) section of the document for further information.

When using Radiata Pine weatherboards, the paint colour’s Light Reflectance Value (LRV) must be at least 45% to minimise dimensional movements that can cause cupping and splitting.

Note: Follow coating manufacturer specifications at all times.

Note: For information on maintaining coatings refer to [JSC Maintenance Guide](#).

INSTALLATION

JSC RustiClad System must be installed by a suitably qualified and experienced trades person. Where Restricted Building Work (RBW) applies, the installer shall be a Licensed Building Practitioner (LBP) or supervised by an LBP.

CUTTING AND INSTALLING CAVITY BATTENS

Cut the top and bottom ends of the cavity battens on a 20-30° angle, sloping away from the framing.

Cut cavity battens through the full thickness. Do not cut through a castellation. Cavity battens must have full contact with the back of the weatherboard and wall underlay at each end of the batten.

Vertical Cavity Battens



Incorrect cut: cavity batten cut through front rebate



Correct cut: cavity batten on 20-30° angle and cut through the full thickness of the batten

When installing cavity battens, take into account all accessory components that can add to cavity thickness, such as cavity closures and flashings. Install cavity battens at the same plane to ensure the back of the boards makes full contact with them. If necessary, adjust the thickness of the cavity battens with a planer (up to a maximum of 5mm) to properly accommodate these components.

On internal corners, avoid tearing the wall underlay with the cavity batten. Flashing tape is recommended. Cavity batten can be planed to remove sharp edges if necessary.

To better support flashings, small mouldings, or narrow weatherboards, we recommend staggering the castellations of the cavity battens in relation to one another.

Ensure cavity battens are spaced 5-10mm from each other on ends/joints, internal and external corners, and when parallel.

Fastenings must penetrate the cavity batten through its thickest points, not through the castellations. Stagger the fixings on either side of the cavity batten’s centre line to avoid interference with weatherboard fixings.

For Very High (VH) and Extra High (EH) wind zones (as per [NZS 3604:2011](#)), a solid batten (non-castellated) is required down one side of an external corner to provide pressure isolation between different walls.

Non-Structural Cavity Battens

JSC-U 45×20 Non-Structural Cavity Battens the battens must be installed vertically, over the studs, at maximum 600mm centres. Refer to [E2/AS1 Table C.3.1.1](#).

Before installing the cladding, temporarily fix the **JSC-U 45×20 Non-Structural Cavity Battens** with stainless steel 50mm clouts or similar to the timber frame.

Note: JSC do not endorse the installation of JSC-U 45×20 Non-Structural Cavity Battens over other substrates other than timber framing.

Structural Cavity Battens

The **JSC-V 45×45** and **JSC 70×45 Structural Cavity Battens** become structural wall components.

Vertical structural cavity battens are to be structurally fixed to the wall framing. Refer to [JSC Structural Cavity Batten Fixing Guide](#) for fastenings and layout options.

When joining 45mm thick cavity battens, our preferred method is to cut the joining ends of the battens at a 30° angle with an 8mm (+/-2mm) gap between the joining ends. Ensure that the cavity batten fixings will not interfere with the weatherboard fixings.

We recommend always staggering the junctions.

FLASHINGS

Flashings at corners, openings, and wall intersections must be installed to prevent water from entering the cavity.

When installing rigid metal flashings at corner details, it is essential to pre-drill the flashing. The corner moulding fixings should only penetrate the cavity battens—there is no need for these fixings to go through to the timber framing.

For flexible flashings, such as uPVC, ensure that the moulding fixings are embedded directly into the timber framing for proper support.

When using 45mm structural cavity battens, do not use flexible corner flashings. The cavity batten

positioning will not provide the necessary support for these flashings.

BOARDS LAYOUT

Plan the layout of the weatherboards to ensure a full board is positioned above window and door heads. If this is not achievable, two boards must be joined to make a scarf joint above the head flashing.

BOTTOM BOARDS

JSC recommends removing the lap from the bottom RustiClad board, as this area is more exposed to mechanical impact and the lap is thinner.

To create the 15° angle that forms a drip edge, cut from the thicker part of the board and seal all end cuts as per usual. Alternatively, use a wider board and trim it to match the cover width of other boards.

Ensure at least half the board is supported by cavity battens, and place fixings as close to the centre of the profile as possible. Refer to detail RC42 in the Technical Drawing set.

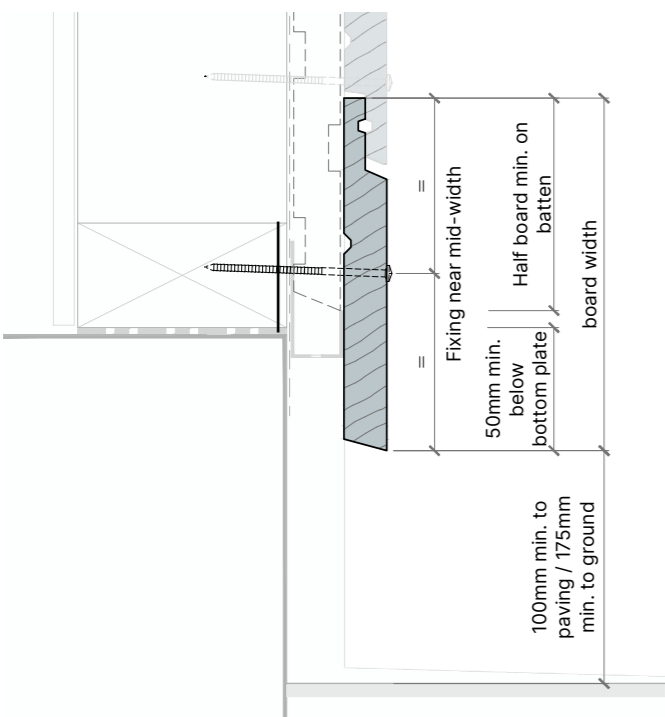


Figure 1 - RustiClad Bottom Board Installation

Bottom Board Fixing:

- Ensure that at least half the width of the board is supported by cavity battens.
- Nail to be placed as close to the middle of the board as possible.
- Cut off the lap of the bottom board. Alternatively, use a wider board and trim it to match the cover of the other boards.

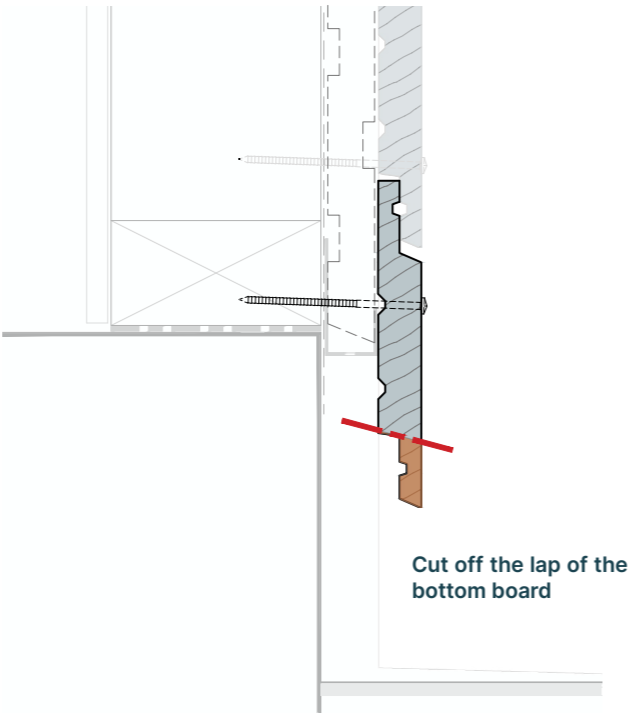
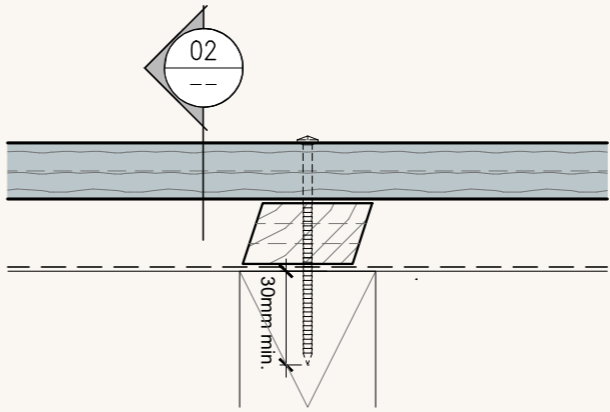
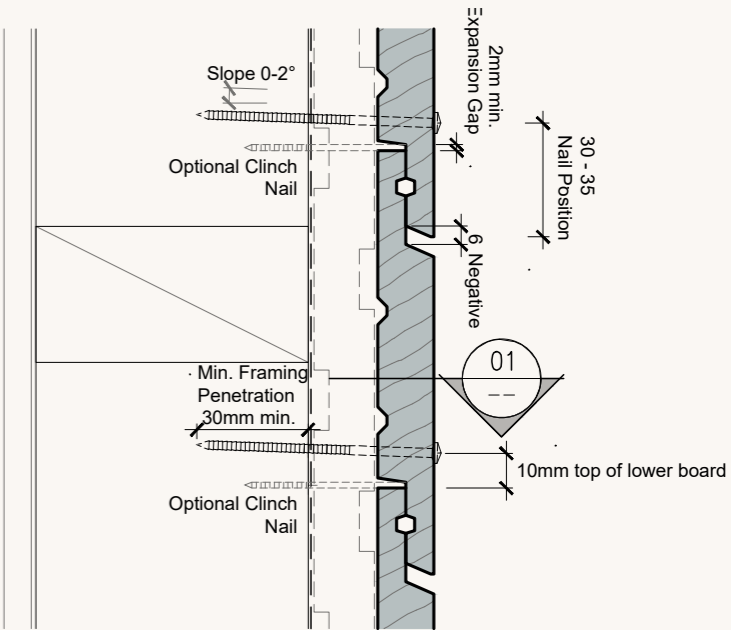


Figure 2 - RustiClad board lap to be cut off from bottom board

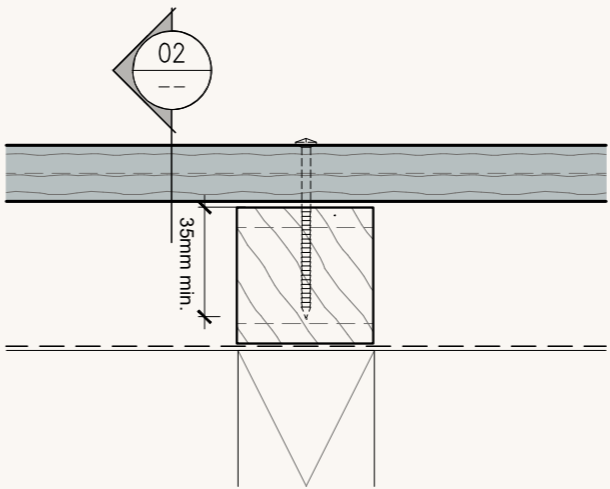


Plan Section 01

Figure 3 - Typical Horizontal Rusticated Weatherboard Installation
- 20mm non-structural cavity battens on Timber Framing

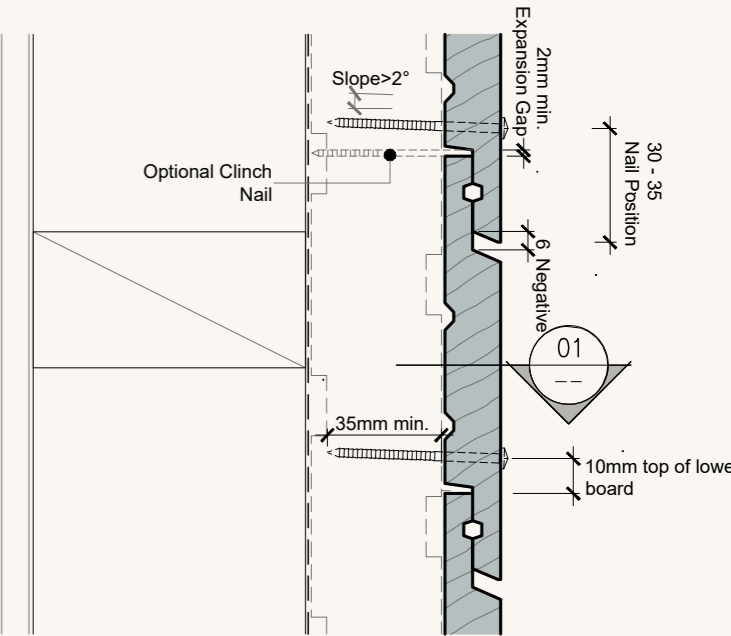


Cross Section 02



Plan Section 01

Figure 4 - Typical Horizontal Rusticated Weatherboard Installation
- 45mm structural cavity battens on Timber Framing



Cross Section 02

When fixing cavity battens to framing, avoid fixing them on their centre line. Stagger the cavity battens fixings to prevent interference with weatherboard fixings.

Note: Exposed Board Ends - Where weatherboards have an exposed bottom edge such as at the Bottom Plate, Inter-storey and Overhead Soffit junctions, the bottom of the boards should be cut back at 15 degrees to form a drip edge. The cut end should be coated up the back of the board. In the case of paint, sharp edges should be eased and the primer should be brushed thoroughly into the cut end, up the back and then top-coated. The areas where board ends are visually exposed must be checked as part of every coating maintenance inspection.

WEATHERBOARD INSTALLATION

Before installing weatherboards:

- Ensure weatherboards are dry, free of contamination, and have a consistent moisture content within the specified range.
- Ensure weatherboards have a suitable exterior grade coating on all sides, including cut ends.
- Optimise board lengths to minimise wastage and joints.
- Remove any loose or bark-encased knots or timber defects that may allow moisture to enter.
- Install required flashings.
- Use back flashing behind the cladding at corners, joins, and junctions for weathertightness.
- Install cavity closure continuously around the bottom of the cavity.
- Keep openings in cavity closer/vermin-proofing clear for effective draining and venting.
- Ensure head flashing stop ends are in place.

Start installing JSC RustiClad Weatherboards at the bottom of the wall. Boards must be installed flat and level.

Accurate packers should be used at the face of the boards to achieve consistent negative space, align weather grooves and set the correct expansion gap. Alternatively, a laser level can be used to mark the board layout and maintain alignment throughout installation. Refer to **Figure 3 and Figure 4 - Typical Horizontal Rusticated Weatherboard Installation**. During installation, cut ends must be double coated.

Use a laser or mechanical device to accurately set-out all nailing.

JSC weatherboards must be pre-drilled with a slight upward slope (0-2°). The hole should be approximately 1mm smaller than the nail shank to reduce the risk of moisture entry.

Note: For example, for a 75 × 3.25mm nail, use a 2.5mm drill bit.

When using **JSC-U 45×20 Non-Structural Cavity Battens**, weatherboard fixings provide the true primary

fixing for the cavity batten. Fix the weatherboards with a minimum of 30mm penetration into the timber wall framing as per [E2/AS1 Table C.3.1.1](#) and [Table 2 - Fixings into Framing](#).

When using **JSC-V 45×45** or **JSC 70×45 Structural Cavity Battens**, fix the weatherboards with a minimum of 35mm penetration into the cavity battens.

Single fix each weatherboard at 30-35mm from the overlapping edge to achieve a minimum of 30mm fixing penetration into the timber framing or 35mm into the structural cavity batten. Single fixing allows the underlap to move, preventing stress from timber expansion and contraction.

Do not pin the laps or face of the board (this characterises double fixing). Always single-fix the board. Never pin the laps.

Note: Scribes must be bedded in sealant to weatherboards for weathertightness.

Refer to **Table 2 - Fixings into Framing**.

Clinch Nails (Optional)

If desired, 40mm x 2.0mm stainless steel clinch nails can be used to secure the boards until they are nailed off.

Guidelines for Using Clinch Nails:

- Clinch nails are optional. They serve as an aid to installation only and do not contribute to fixing or affect the overall set-out of the weatherboards.
- Clinch nails cannot be fully relied upon as a layout gauge. For accurate alignment of weather grooves and setting the expansion gap, use a precise packer to set the negative detail.
- For shorter boards, place one clinch nail in the middle and use additional clinch nails to maintain even spacings. Ensure they are under 1.8 metres apart.
- Clinch nails do not reduce the number of weatherboard nails required.

Scribers

Ensure scribes extend at least 5mm past the joinery sill and are bevelled back to the wall at an angle of 30-45°. Keep in mind that scribes and small decorative profiles are more prone to splitting and decay. They may only last 5 years in certain situations. Yearly maintenance cycles should be followed to keep integrity and to determine if re-coating, or replacement is needed.

Fix scribes and decorative trims using short screws or nails (35-50mm long) that do not penetrate the framing.

FINISHING

Oil/Stain Finish

- All cut ends shall be double coated during installation to protect against moisture uptake.
- Finish the nail heads flush onto and not into the board surface.
- Do not over-drive the nail head that crushes the timber surface beneath and around the nail.
- Top coat of selected suitable stain should be applied to the visible surfaces after installation as per the coating manufacturer's instructions.

Paint Finish

- All cut ends and uncoated surfaces shall be double coated with a suitable alkyd or acrylic based primer during installation to protect against moisture uptake.
- Remove all sharp edges to provide a radius and minimise stress on the paint film.
- Nails are to be punched and the holes to be primed promptly.
- Fill holes with a suitable filler. Filled holes are to be primed again and sanded once dry.
- Ensure the surface is clean and free from any contaminants, including oils or non-paintable sealants, before applying the top coats.
- At least two top coats of suitable acrylic paint should be applied after installation as per the coating manufacturer's instructions.

Note: Always ease sharp edges. Paint does not adhere well to sharp edges and is prone to cracking. Prime all cut ends thoroughly to seal the timber, prevent moisture ingress, and reduce the risk of tannin bleed affecting topcoats. Follow the coating manufacturer's specifications.

Example: When cutting a 15° drip edge at window heads or bottom boards, the resulting sharp edge at the face of the board must be slightly rounded. This allows the paint film to build properly and prevents early coating failure.

Note: For paint-finished weatherboards, JSC recommends external corner junctions to have box corners or J42 Corner Moulding. Refer to JSC Technical details.

QUALITY CHECK

On completion, visually inspect all sides of the building to ensure that the cladding system is properly installed. The building owner should be advised of all maintenance requirements.

MAINTENANCE

Building owners are responsible for the maintenance of their JSC weatherboards. Annual inspections must be made to ensure that all aspects of the cladding remain in a weatherproof condition. Repair to damaged areas and maintenance where signs of deterioration are evident, must be addressed promptly. Repairs to sealants, coatings, flashings, scribes, decorative elements and weatherboards must follow the relevant manufacturer's instructions. Weatherboards should be washed when surface dirt, pollen, or organic matter accumulates. In environments such as bush areas or locations with high seasonal pollen, cleaning may be required more frequently. For further information refer to the latest [JSC Maintenance Guide](#).

APPENDIX 1

DETAIL NUMBER	DETAIL TITLE	RUSTICLAD SYSTEM ACCESSORIES
RC10	Window Head Detail	Head Flashing <ul style="list-style-type: none">Sizes as per E2/AS1 Table 4.5.1.1In accordance with E2/AS1 Paragraph 9.1.10 or window manufacturer's instructionsUsually supplied by joinery companiesJSC do not recommend hooks or hems. Therefore, the flashing upstand dimensions must be increased by 25mm in accordance with E2/AS1, Paragraph 4.4.3.JSC recommends a flexible cavity closer at window heads to accommodate accessory buildup and batten machining
RC11	Window Sill Detail	
RC12	Window Jamb Detail - Scriber	
RC13	Window Jamb Detail - No Scriber	
RC30	Square Utility Head Detail	Window Joinery <ul style="list-style-type: none">To be installed in accordance with E2/AS1 Paragraph 9.1.9 and SNZ TS 4211:2022 and be compliant with BPS Subsection 4.4.1 J Mould <ul style="list-style-type: none">65mm x Thickness of the weatherboard
RC31	Square Utility Sill Detail	
RC32	Square Utility Jamb Detail	
RC40	Weatherboard Scarf Joint	Back Flashing <ul style="list-style-type: none">Recommended min. 50mm coverage from any butt jointMaterials to comply with E2/AS1 Table C.1.1.A
RC41	Vertical Control Joint	
RC42	Base of Wall - Concrete	Cavity Closer <ul style="list-style-type: none">Size to suit cavityMaterials to comply with E2/AS1 9.1.7.5, 9.1.7.6, 9.1.7.7 and Figure 9.1.7.4A or to be covered by CodeMark or a BRANZ Appraisal, provided the conditions of use and scope complyMinimum vent 1000mm² / linear meter
RC43	Base of Wall - Timber	
RC44	Pipe Penetration	Pipe Penetration Boot <ul style="list-style-type: none">To comply with E2/AS1 Paragraph 9.1.8.3 or to be covered by CodeMark or a BRANZ Appraisal used within the scopeTo be installed per manufacturer's specifications

DETAIL NUMBER	DETAIL TITLE	RUSTICLAD SYSTEM ACCESSORIES
RC50	External Corner - Box Corner	Corner Flashing <ul style="list-style-type: none">Sizes as per E2/AS1 Table 4.5.1.1 and Paragraph 4.4.3Materials to comply with E2/AS1 Table C.1.1.1B and Table C.1.1.1CFor PVC or other flexible materials, ensure flashing maintains contact with the back of cladding. If required, use extra cavity batten.When using 45mm structural cavity battens, do not use flexible corner flashings. The cavity batten positioning will not provide the necessary support for these flashings.
RC51	3D - External Corner - Box Corner	
RC52	External Corner - J42	
RC53	3D - External Corner - J42	
RC60	Internal Corner - J44	
RC61	3D - Internal Corner - J44	
RC62	Internal Corner	
RC63	3D - Internal Corner	
RC62	Internal Corner	
RC70	Base of Wall - Membrane Roof	
RC71a	Parapet Saddle Flashing - Stage One	Saddle Flashing <ul style="list-style-type: none">In accordance with E2/AS1 Figure 6.2.3.1B Cap Flashing <ul style="list-style-type: none">Must be in accordance with E2/AS1 Paragraph 7.5.5
RC71b	Parapet Saddle Flashing - Stage Two	
RC71c	Parapet Saddle Flashing - Stage Three	
RC71d	Parapet Saddle Flashing - Stage Four	
RC75	Parapet Detail	
RC77	Decorative Bracket - Batten Detail	Z Flashing <ul style="list-style-type: none">JSC do not recommend hooks or hems. Therefore, the flashing upstand dimensions must be increased by 25mm in accordance with E2/AS1, Paragraph 4.4.3In accordance with E2/AS1 Paragraph 9.1.8.4
RC80	Inter-storey Detail	
RC81	Apron Flashing Roof to Wall Junction	
RC82	Soffit Detail at Wall	
RC83	Soffit Detail at Fascia	
RC84	Raking Soffit at Wall	
RC85	Gable Soffit Detail at Wall	

DETAIL NUMBER	DETAIL TITLE	RUSTICLAD SYSTEM ACCESSORIES
RC90	Weatherboard Fixing - Plan Section	Weatherboard Fixings - Stain Finish
RC91	Weatherboard Fixing - Cross Section	<ul style="list-style-type: none">Materials to comply with E2/AS1 Table C.1.1.1B and Table C.1.1.1CFastener length and position per E2/AS1 Table C.3.1.1Stainless steel or silicon bronze annular grooved Rose Head, Pentagon Head and Flat Head Weatherboard Fixings - Paint Finish <ul style="list-style-type: none">Materials to comply with E2/AS1 Table C.1.1.1B and Table C.1.1.1CFastener length and position per E2/AS1 Table C.3.1.1Stainless steel or silicon bronze annular grooved Jolt Head, Flat Head, Pentagon Head and Rose Head
RC92	Apron Flashing Gutter to Wall	

RUSTICLAD SYSTEM ACCESSORIES
Wall Underlay (Flexible or Rigid) <ul style="list-style-type: none">To comply with E2/AS1 Table C.2.1.1 or be covered by CodeMark or a BRANZ Appraisal used within the scopeInstalled and handled per manufacturer's specification
Flashing Tape <ul style="list-style-type: none">To comply with E2/AS1 Paragraph 4.2.12 or be a product with a CodeMark or a BRANZ Appraisal used within the scopeTo be compatible with wall underlay
Clouts <ul style="list-style-type: none">Materials to comply with E2/AS1 Table C.1.1.1B and Table C.1.1.1CNail length and position per E2/AS1 Table C.3.1.1Stainless steel
Other Fixings <ul style="list-style-type: none">Any other fixing shall comply with NZS 3604:2011 for timber framing
Sealant <ul style="list-style-type: none">To comply with E2/AS1 Paragraph 9.1.5To be compatible with coating and other elements
Coating <ul style="list-style-type: none">Should be suitable to use as external cladding coatingAll weatherboards are recommended to be delivered to site with minimum of one coat of selected coating on all four sidesCoat the cut ends with two coats wet on wetSubsequent coats are done after the installationFollow the manufacturer's specifications at all times

APPENDIX 2

EXTERNAL REFERENCE

- MBIE NZ Building Code Clause E2 External Moisture (refer to www.building.govt.nz)
- Department of Building and Housing (DBH). Constructing Cavities for Wall Claddings (refer to www.building.govt.nz)
- BRANZ Bulletin BU468 [December 2005] Fixing Timber Weatherboards (refer to www.branz.co.nz/BU468)
- BRANZ [May 2015] Good Practice Guide: Timber Cladding (refer to www.branz.co.nz)
- BRANZ Build 154-33- Build Right Structurally Fixed Cavity Battens (refer to www.buildmagazine.org.nz)
- BRANZ Build 173-28- Build Right Coatings for Timber Weatherboards (refer to www.buildmagazine.org.nz)
- BRANZ Bulletin BU531 [February 2011] Designing for Thermal and Moisture Movement (refer to www.branz.co.nz/BU531)
- Window & Glass Association NZ (WGANZ) (refer to wganz.org.nz)
- NZS AS 1720.1:2022 (refer to www.standards.govt.nz)
- NZS 3604:2011 Timber-framed buildings (refer to www.standards.govt.nz)

Disclaimer: It is the responsibility of the designer/specifier to ensure the suitability and specification of any third-party accessories used with our cladding system. JSC is not liable for the installation of any components or accessories not supplied by us. If there is any uncertainty, please seek expert advice.

The related documents mentioned above were accurate and up to date at the time of writing this guide. However, please note that information may have changed since then, and we recommend verifying any external sources for the most current information.

FOR TECHNICAL DRAWINGS & OTHER CLADDING RELATED DOCUMENTS

See our full set of detailed information covering the installation, profiles, certification, drawings, and species. Visit the related website page using the URL below or scan the QR code to access.

jsc.co.nz/products/horizontal-rusticated-cladding



SCAN ME



PREMIUM ARCHITECTURAL
& BUILDING SOLUTIONS

jsc.co.nz

TechHelp@jsc.co.nz | Sales@jsc.co.nz

FIND JSC ONLINE



AUCKLAND

(09) 412 2800
22 Sawmill Road
Riverhead

HAMILTON

0800 57 26 88
43 McKee Street
Pukete

WELLINGTON

0800 57 26 88
61 Seaview Road
Seaview

CHRISTCHURCH

(03) 348 9726
23 William Lewis Drive
Sockburn